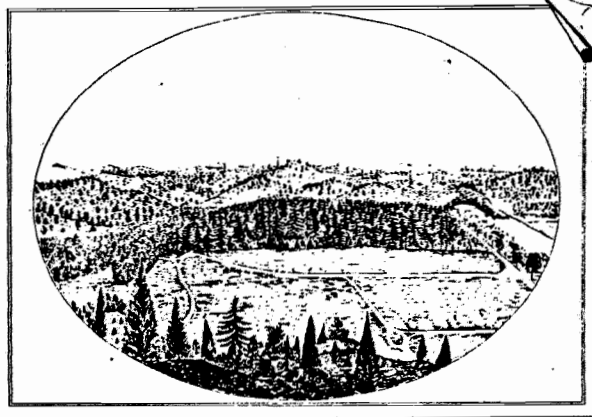


View of Pine Banks.



TOPOGRAPHICAL
 III II
 of
 PROPOSED ROADS AND LAND
 AT
PINE BANKS
 IN
 MALDEN AND MELROSE.
 OWNED BY
 HON. ELISHA S. CONVERSE.

— ONE 1000. —

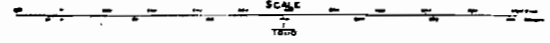
Surveyed and drawn by
 SOLON M. JAMES, C.E.
 Melrose, Mass.

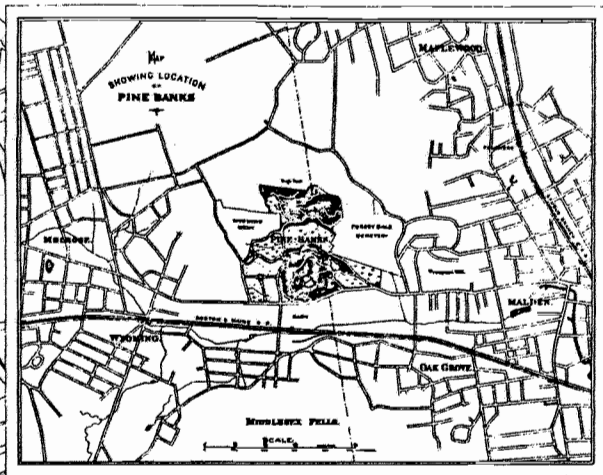
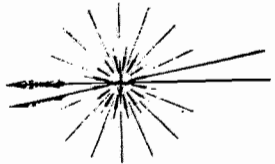
Roads designed by
 Richard L. S. Stone,
 Landscape Architect, Boston, Mass.

NOTE

The Proposed Roads are forty feet wide; the ordinary being eighteen feet
 and a walk on each side five feet wide, with a drainage ditch between.
 There are to be no fences on front lines of lots, or on rear forty feet of
 the front on the side lines of the lots.

SCALE





+ PLAN +
 OF
PROPOSED ROADS AND LOTS
 IN
PINE BANKS,
 IN
 MALDEN AND MELROSE.
 OWNED BY
HON. ELISHA S. CONVERSE.

— Dec. 1884. —

EDWARD F. ADAMS,
 Landscape Architect,
 178 Devonshire Street,
 Boston.
 Topographical Survey made by S.M. Allen,
 of Malden, Mass.

— EXPLANATION —
 The figures in each lot give the approximate Area in square feet as obtained
 by "planimeter" upon the large scale Detail Plans. Elevations of prominent
 points, in feet above surface of Dry Dock, Chas. F.W. are shown enclosed in circles.
 The Proposed Roads are forty feet wide, the roadway being eight feet 8
 and sixteenth on each side free of grade, with grassed-in between.
 There are to be no drainage ditches of lots, or within forty feet of
 the front on the side lines of the Lots.

